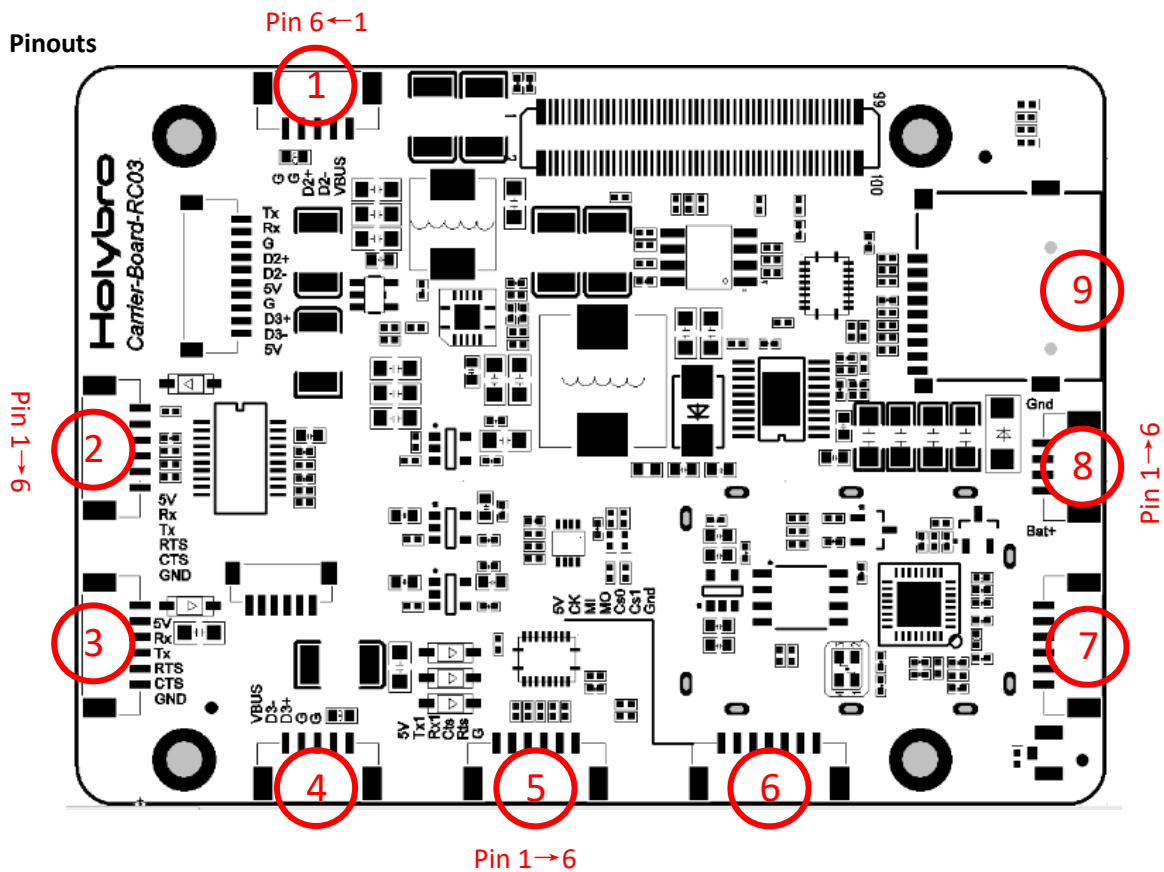


# PX4 Vision\_carrier board pinouts



Port 1.Up-Core USB2.0 Port

Pin	Signal	Volt
1(red)	VBUS (out)	+5V
2(white)	D-	+3.3V
3(green)	D+	+3.3V
4(black)	GND	GND
5(black)	SHIELD	GND

Port 2.UART2, FT231 USB to UART Port, from Up-Core USB2.0 Port0(support 921600 baudrate)

Pin	Signal	Volt
1	VCC(out)	+5V
2	RXD	+3.3V
3	TXD	+3.3V
4	RTS	+3.3V
5	CTS	+3.3V
6	GND	GND

**Port3.UART3, ESP8266 UART Port(support 921600 baudrate)**

Pin	Signal	Volt
1	VCC(in)	+5V
2	RXD	+3.3V
3	TXD	+3.3V
4	RTS	+3.3V
5	CTS	+3.3V

**Port 4.Up-Core USB2.0 Port**

Pin	Signal	Volt
1(red)	VBUS (out)	+5V
2(white)	D-	+3.3V
3(green)	D+	+3.3V
4(black)	GND	GND
5(black)	SHIELD	GND

**Port 5.UART1, Up-Core UART1 Port**

Pin	Signal	Volt
1	VCC(out)	+5V
2	TXD1	+3.3V
3	RXD1	+3.3V
4	CTS1	+3.3V
5	RTS1	+3.3V
6	GND	GND

**Port 6.Up-Core SPI Port**

Pin	Signal	Volt
1	VCC(out)	+5V
2	SPI_SCLK	+3.3V
3	SPI_MISO	+3.3V
4	SPI_MOSI	+3.3V
5	SPI_CS0	+3.3V
6	SPI_CS1	+3.3V
7	GND	GND

**Port 7.UART0 & I2C1, Up-Core UART0 Port & I2C1 Port**

Pin	Signal	Volt
1	VCC(out)	+5V
2	TXD0	+3.3V
3	RXD0	+3.3V
4	SCL1	+3.3V
5	SDA1	+3.3V
6	GND	GND

**Port 8.Power In Port**

Pin	Signal	Volt
1	VCC(in)	7~51v
2	VCC(in)	7~51v
3	GND	GND
4	GND	GND

**Port 9.Up-Core MicroSD Port**