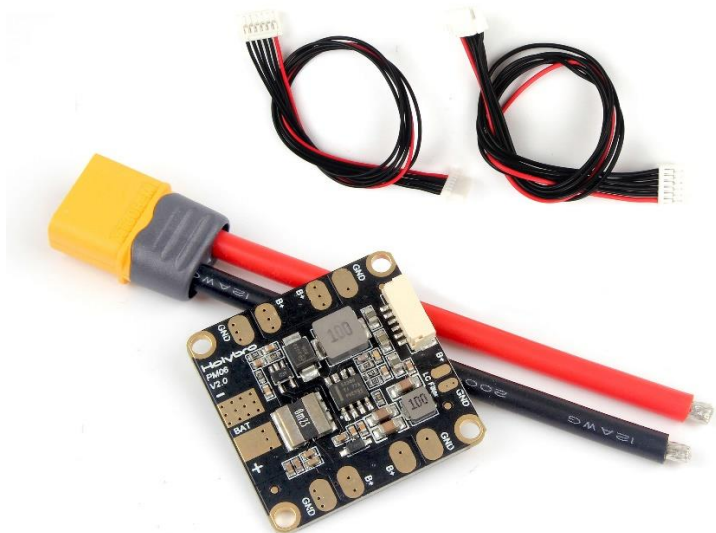


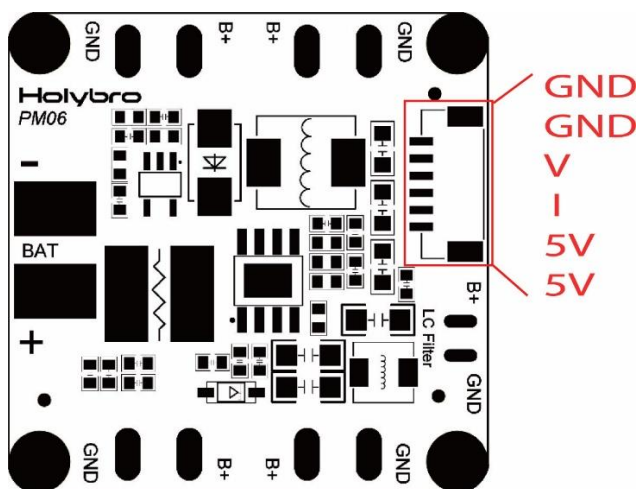
PM06 v2 Power Module



Spec:

PCB Current: 120A continued
 UBEC Current: 3A Max
 Power input: DC 7V~42V(2S~10S)
 Power output: DC 5.1V~5.3V
 Dimensions: 35x35x5mm
 Mounting hole: 30.5mm*30.5mm
 Weight: 7g

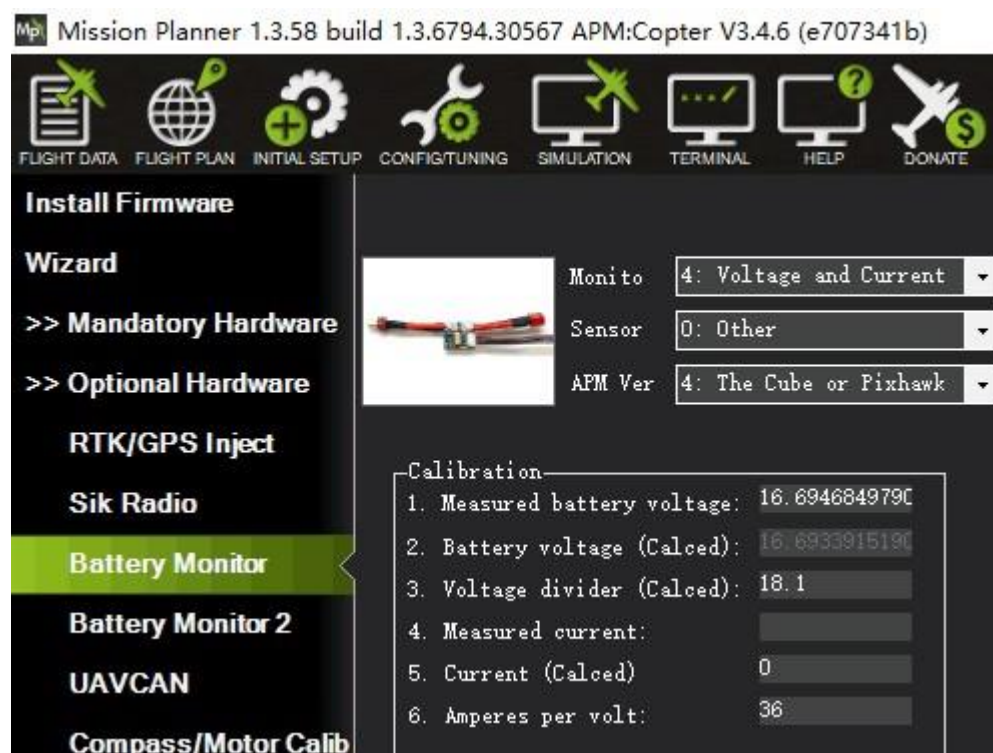
PIN MAP



Make the PM06 show the quantity of electric charge of your battery

Mission Planner setup:

1. Connect PM06 to the battery, also connect it to Mission Planner via USB.
2. Click "INITIAL SETUP" and come to the menu "**Battery Monitor**".
3. Make "Monito" into "**Voltage and Current**".
4. Make "Sensor" into "**Other**".
5. Make "APM Ver" into "**The Cube or Pixhawk**".
6. Input "**18.1**" into Voltage divider (Calced).
7. Input "**36**" into "Amperes per volt".
8. Disconnect and reconnect it to finish the setting up. ("Measured battery voltage" shows the current quantity of electric charge of the battery.)



Package Include:

- PM06 board*1
- 80mm XT60 connector wire*1
- 6pin GH cable *1
- 6pin JST cable *1