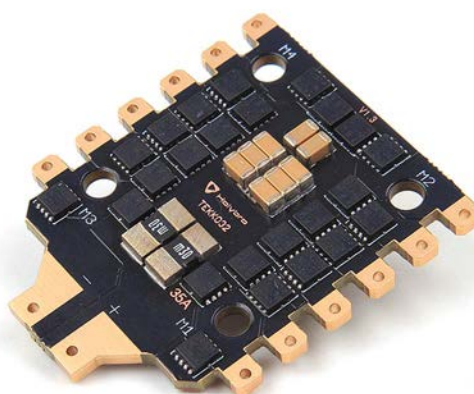


#31053

Tekko32 F3 4in1 mini 35A ESC



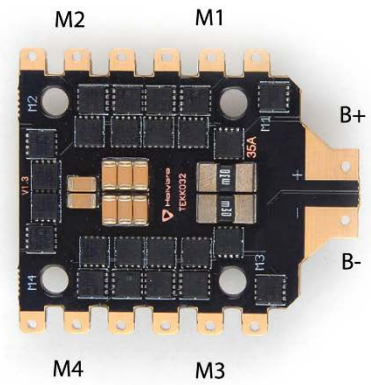
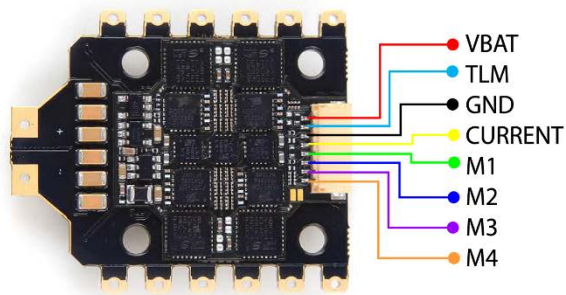
BLHELI32 / F3 MCU/4x 35A

The New BLHELI32 ESC adapted the F3 MCU, which will provide a smoother control and faster response speed. 4x 35A F3 BLHELI32 ESC in 20x20 standard .

SPEC:

- F3 MCU, double the speed of F051, the MCU works at 108Mhz
- 32bit ESC with BLHELI32 firmware
- Supports 3-6S lipo input
- Default PWM output 96K
- Amperage meter scale ratio has been adjusted to 185.
- PWM input, TLM supported
- Voltage output (VBAT)
- NO output BEC
- Supports oneshot / Multishot / Dshot PWM
- Supports damped light
- Ext. cap needed for 6s (1000uf 35v for 6s usage.)
- Mounting holes: 20x20mm(M3)
- Size:32 x 38 mm
- Weight: 8g

PIN MAP:



Package included:

- Tekko32 F3 4in1 mini ESC(35A) *1
- M2 Anti-Vibration Silicone Grommet Insert *4
- Electrolytic capacitor: 1000uF 35v *1
- 8pin to 8pin 1mm pitch 65mm cable *1
- 8pin to 8pin 1mm pitch 25mm cable *1

Some Tips:

- [BLHeli_32 ESC Firmware Overview](#)
- [GitHub](#)