

#15009

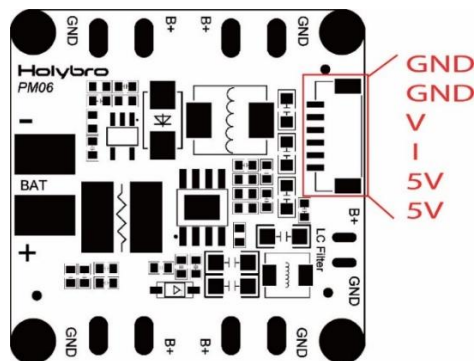
PM06 v2 Power Module



Spec:

Power Module Rated current:60A
Power Module Max current:120A(<60S)
UBEC output Current: 3A Max
UBEC Input Voltage: 7~42V (10S LiPo)
UBEC maximum power consumption: 18W
Power output: DC 5.1V~5.3V
Dimensions: 35x35x5mm
Mounting hole: 30.5mm*30.5mm
Weight: 24g

PIN MAP

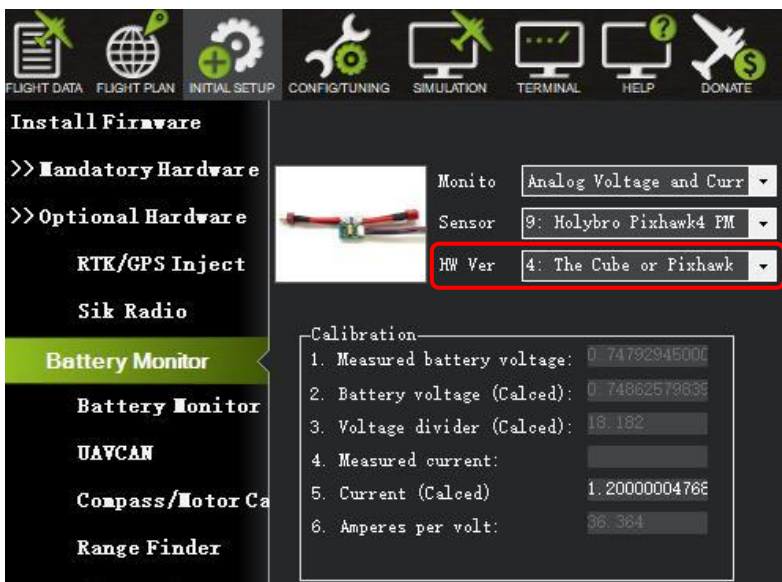


Make the PM06 show the quantity of electric charge of your battery

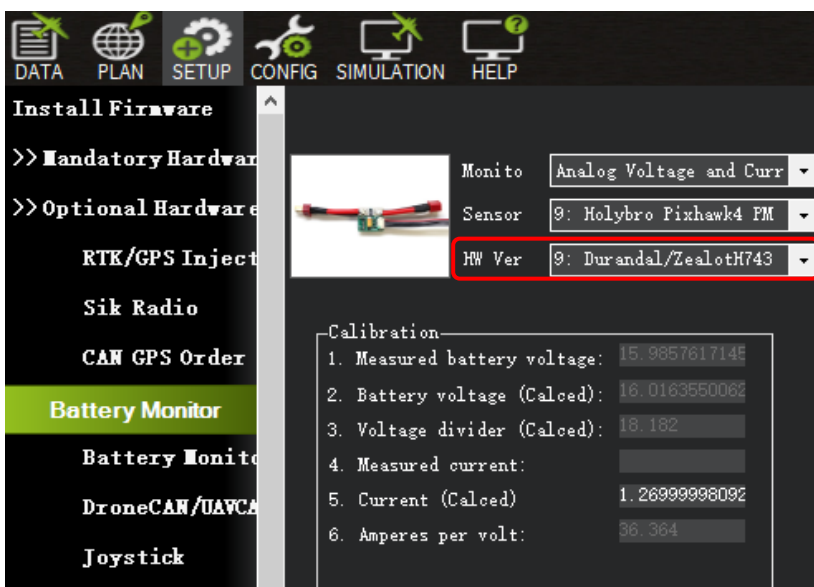
Mission Planner setup:

1. Connect PM06 to the battery, also connect it to Mission Planner via USB.
2. Click "INITIAL SETUP" and come to the menu "Battery Monitor".
3. Make "Monito" into "Analog Voltage and Current".
4. Make "Sensor" into "9: Holybro Pixhawk4 PM".
5. Make "HW Ver: "The Cube or Pixhawk" (pixhawk4,pixhawk4mini,pix32v5,pix32) " *
"HW Ver: Durandal (Durandal) " *
6. Input "18.182" into Voltage divider (Calced).
7. Input "36.364" into "Amperes per volt".
8. Disconnect and reconnect it to finish the setting up. ("Measured battery voltage" shows the current quantity of electric charge of the battery.)

※HW Ver: "The Cube or Pixhawk" (pixhawk4,pixhawk4mini,pix32v5,pix32)



※HW Ver: Durandal (Durandal) .Or you can designate it in the Full Parameter List



The XT60 plug and 12AWG wire that PM06 comes with is rated for 30A continuous current and 60A instantaneous current (<1 minute). If a higher current is being used, the plug type and wire size should be changed accordingly. The specifications and models are as follows:

Plug specification	wire size	Rated current: (4 hours, temperature rise <60 degrees)	Max current: (1 minute, temperature rise <60 degrees)
XT60	12AWG	30A	60A
XT90	10AWG	45A	90A
XT120	8AWG	60A	120A

Package Include:

- 1x PM06 board
- 1x 80mm XT60 connector wire (installed)
- 1x Electrolytic capacitor: 220uF 63V(installed)
- 1x JST GH 6pin cable
- 1x JST SH 6pin cable

Holybro is a registered trademark of Holybro, registered in the U.S. and other countries.
©Copyright 2018 Holybro. All Rights Reserved.